

PRICELIST - FEB 2024 - ISSUE 23



FAST FOOD Systems Limited

QUICK SERVICE EXPERT

Fast Food Systems

Unit 1, Headley Park 9, Headley Road East, Woodley, Reading, Berkshire RG5 4SQ

Telephone: +44 (0)118 944 1100

E-mail: sales@fast-food-systems.co.uk

Web: www.fast-food-systems.co.uk





FRIES

<u>Mega Fries</u>	4
<u>Mini Fries</u>	5
<u>Mega Fries Topper</u>	5
<u>Adande Freezer Drawer Unit</u>	5
<u>Mini Fries With Gastro Warmer</u>	5
<u>Server Fries Dump</u>	6
<u>Mini Fries Counter Topper</u>	6
<u>Warmer</u>	6
<u>Frykart</u>	7
<u>Fry Scoop</u>	7



CHICKEN

<u>400 Pass Through Multi Stack</u>	8
<u>700 Pass Through Multi Stack</u>	8
<u>1100 Pass Through Multi Stack</u>	8
<u>Marinade Tumbler</u>	10
<u>Auto Breeder</u>	10
<u>Mega Auto Breeder</u>	10
<u>Mobile Landing Table</u>	10
<u>1600 Pressure Fryer</u>	11
<u>1800 Pressure Fryer</u>	11
<u>2400 Pressure Fryer</u>	12
<u>Pressure Fryer Accessories</u>	13
<u>Gastro Warmers</u>	14
<u>Holding Cabinet</u>	14



BURGERS

<u>Gastro Warmers 3 Pan Pass Through</u>	15
<u>450 Clam Griddle</u>	16
<u>450 Clam Griddle Accessories</u>	17
<u>2 Tier Food Chute FC8</u>	18
<u>2 Tier Food Chute FC14</u>	18
<u>3 Tier Food Chute F14</u>	18
<u>Economy 2 Tier Food Chute</u>	19
<u>Food Chute Accessories</u>	19
<u>Bun Toasters</u>	20
<u>Wrap Stands</u>	21
<u>Dispensers</u>	21
<u>Ceramic Grill</u>	22
<u>Single Clam Grill</u>	23

INDEX



FAST SERV

<u>24</u>	<u>Burger Island</u>
<u>25, 26, 27</u>	<u>Fast Serv Units</u>



CINEMA

<u>28</u>	<u>Popcorn Cabinet</u>
<u>28</u>	<u>Ice Bin</u>
<u>28</u>	<u>Countertop Cooled Dispenser</u>
<u>28</u>	<u>Nacho Holding Cabinet</u>
<u>29</u>	<u>Hot Dog Grills HD2 & HD4</u>
<u>29</u>	<u>Warmer Drawer WD2 & WD4</u>



EXTRA

<u>30</u>	<u>Unis Holding Units</u>
<u>31</u>	<u>Sheila Shine</u>





FRIES RANGE



VIZU MEGA FRIES

- Movable Bag Rack dividers and flaps.
- Chip flip design for easy removal of stray chips
- Place glass on either side of the unit for left or right operation.
- Removable chip dump area for easy cleaning.
- Raised grid to allow excess grease to drain away from chips.
- Unit is easily moved on castors to clean below when required.
- Flush mounted storage doors for easy cleaning.
- Don't forget your [fry scoop](#) ([page 7](#)) when you purchase our Vizu Mega Fries.

Name	Model Code	Dimensions (w x d x h)	Specifications	List Price
Vizu Mega Fries	VIMF	803 x 705 x 1570mm	2.5kW 11A 230V 50Hz	£4,030.00





VIZU MINI FRIES

- Narrow profile when compared with Vizu Mega Fries.
- Suitable for left and right work flow direction.
- Fully welded chip dump area for easy cleaning.
- Removable chip dump divider for easy cleaning.
- Cupboard below for extra storage.
- Packaging + salt shaker area below chip dump for easy access.
- Heavy duty non-marking castor for easy movable unit with breaks.



VIZU MEGA FRIES TOPPER & ADANDE FREEZER DRAWER

- Provides bulk freezer storage at the point of use in hot and busy kitchens.
- No freezer burn, no clumping and no ice crystals.
- Keeps food fresher and safer for longer.
- Space saving format.
- Uses significantly less energy.



VIZU SUPER FRIES

- Larger usable chip scoop zone.
- Heating can be switched off independently on the left or right side to save energy.
- Suitable for busier operations.
- Suitable for left and right work flow direction
- Fully welded chip dump area for easy cleaning.
- Removable chip dump divider for easy cleaning.

Name	Model Code	Dimensions (w x d x h)	Specifications	List Price
Vizu Mini Fries	VIMIF600S	605 x 554 x 1530mm	1.5kW 7A 230V 50Hz	£3,055.00
Vizu Mega Fries Topper	VIMFTOPPER	888 x 917 x 1010mm	2.5kW 11A 230V 50Hz	£3,855.00
Adande freezer drawer unit on high castors	ADVCR1/HCW	878 x 885 x 616mm	3kW 13A 230V 50Hz	£3,770.00
Vizu Super Fries	VISF	1200 x 705 x 1570mm	2.5kw 11A 230V 50Hz	£5,420.00





VIZU SERVER

- Heated from below.
- Product is presented to its best via above warm heat lamps.
- Side bagging racks allows bagged product to be grabbed from front and back.
- The scoop area is completely removable for easy cleaning.
- Easy to use slots allows quick access to scoop when stored.
- Optional plate food rack for short holding for serving.



VIZU MINI FRIES COUNTER TOPPER

- Narrow profile when compared with Vizu Mega Fries Topper.
- Suitable for left and right work flow direction.
- Fully welded chip dump area for easy cleaning.
- Removable chip dump divider for easy cleaning.



VIZU WARMER

- Counter top unit.
- 1/1 gastronorm pan chip dump area (GN pan not included).
- Heated from above via high powered heat lamp.
- Small economical design.
- Fried product scoop with grease drainage.
- Suitable for left or right operation flow.
- Easy to clean removable parts.

Name	Model Code	Dimensions (w x d x h)	Specifications	List Price
Vizu Server	VI003S	802 x 789 x 884mm	2.1kW 10A 230V 50Hz	£3,445.00
Vizu Mini Fries Counter Topper	VIMIF600CT	605 x 554 x 831mm	1.5kW 7A 230V 50Hz	£2,190.00
Vizu Warmer	VI016	360 x 566 x 487mm	1kW 4.3A 230V 50Hz	£870.00

Vizu Gastro & Warmer Accessories

Model Code	Description	List Price
GSGAST90042	1/1 Gastronorm pan 100mm deep	£33.00 (Net)
GSGAST160	Stainless steel wire inserts to fit 1/1 GN pan (any depth)	£13.00 (Net)
FS32CW135	Clear 1/3 polycarbonate gastronorm pan 65mm deep	£6.30 (Net)
VI016A	Ski slope drain plate for 100mm deep 1/1 GN pan	£68.00
VI016B	'V' shaped bagging rack for 100mm deep 1/1 GN pan	£90.00
FFSUPPORT	Stainless steel GN pan support bars to assist pan layout	£32.00



VIZU FRYKART

- All stainless steel welded construction.
- Heavy duty castors (two lockable).
- Removable drip tray set in base frame.
- Fry baskets not included.



Super High Heat Right Handed Scoop



Super High Heat Double Handed Scoop

Name	Model Code	Dimensions (w x d x h)	Specifications	List Price
Vizu Frykart	VI006A	408 x 605 x 1407mm	N/A	£615.00

Name	Model Code	Dimensions (w x d x h)	Specifications	Net Price
Super High Heat Right Handed Scoop	VOTR3670	191 x 159 x 279mm	N/A	£48.00
Super High Heat Double Handed Scoop	VOTR3672	191 x 159 x 279mm	N/A	£55.00



PASS THROUGH RANGE



VIZU 1100 PASS THROUGH MULTI STACK

- 12 x 1/1 gastronorm sized racks
- Variable digital thermostat control with illuminated interior.
- Option for bottle fed or permanent connection to standard water supply.
- Automatic filling of water tray.
- Left or right water feed option.
- No fan to fail – unit uses convection to circulate humidity.



VIZU 700 PASS THROUGH MULTI STACK

- 8 x 1/1 gastronorm sized racks
- Variable digital thermostat control with illuminated interior.
- Option for bottle fed or permanent connection to standard water supply.
- Automatic filling of water tray.
- Left or right water feed option.
- No fan to fail – unit uses convection to circulate humidity.



VIZU 400 PASS THROUGH MULTI STACK

- 6 x 1/1 gastronorm sized racks
- Variable digital thermostat control with illuminated interior.
- Small footprint for high volume lower space kitchen environments.
- Removable inter parts for easy cleaning.
- Aesthetically pleasing angled design.
- No fan to fail – unit uses convection to circulate humidity.



VIZU PASS THROUGH CABINET

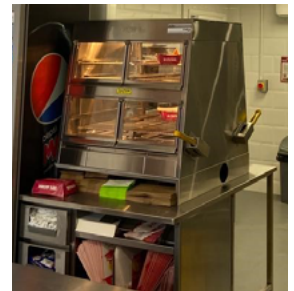
- 6 x 1/1 gastronorm sized racks
- Rubber seal door helps trap heat and humidity more efficiently
- Automatic filling of water tray.
- No fan to fail – unit uses convection to circulate humidity.
- Clear glass doors display cooked products for customers.

Name	Model Code	Dimensions (w x d x h)	Specifications	List Price
Vizu 1100 Pass Through	VI1100PTMS	1140 (1300 with tank) x 780 x 884mm	2kW 9A 230V	£8,465.00
Vizu 700 Pass Through	VI700PTMS	780 (938 with tank) x 780 x 886mm	1.9kW 9A 230V	£8,035.00
Vizu 400 Pass Through	VI400PTMS	470 (628 with tank) x 805 x 933mm	1.4kW 6A 230V	£5,560.00
Vizu Pass Through Cabinet	VIPC	470 x 941 x 948mm	1.4kW 6A 230V	£5,372.38

Vizu Pass Through Accessories

Model Code	Description	List Price
MF0A088	Rack Divider for 400 / 700 / 1100 Pass Through Multi Stack	£35.00
GSGAST90002	1/1 GN pan - 20mm deep	£21.00
GSGAST160	Wire Rack 1/1 grid	£13.00
GSGAST90022	1/1 GN pan - 65mm deep	£28.00





Vizu Fast Serv

A modular counter system from Fast food Systems. Ideal for rear service counters or integrated storage under the front counter.

Designed around 300mm or 600mm modules and with 20 modules in the range, Vizu Fast Serv builds into a unique bespoke counter to precisely fit the needs of your restaurant. Specially-designed modules provide storage for cups and lids, ice, wraps or bags, boxes and condiments, ensuring that staff have everything in hand with minimal movement. Simple units with shelves are ideal for the rear where staff need easy access.

A service channel allows easy access for electrics and water, and is big enough for a post-mix python. The Fast Serv tops are pre-punched, so no messy on-site drilling is required.

Assembly is a breeze, but our engineers are available to deliver and install. Even the biggest of counters can be assembled in just a few hours.

Contact an advisor on +44 (0) 118 944 1100 for more information.
Or check out our Fast Serv units on [page 25](#) for more detail.





BREADING RANGE



VIZU 50LB. COUNTER TOP TUMBLER

- Stainless steel countertop marinade tumbler
- 50lb capacity drum.
- Digital programmable timer control.
- Vacuum pressure gauge display.
- Self levelling leg supports.



VIZU MEGA AUTO BREADER

- Motorised rotary sieve, for dividing re-usable breading mix & dough balls.
- 1-1 GN pan for dipping & 2-1GN pan for breading.
- Easy to disassemble and reassemble for easy maintenance.
- Heavy duty polymer castors, lockable from operator's position.
- Integrated pan lid storage to help maintain a clear & tidy station.
- Suited to busy operations with high volume.



VIZU AUTO BREADER

- Removable pans for breading and coating.
- Lids for pans when not in use.
- Removable motor assembly for easy maintenance.
- Lower tray for product storage.
- Movable unit with heavy duty non-marking castor 2 of which have breaks.
- Make the best use of breading by recycling the usable powder.



VIZU LOADING TROLLEY

- All stainless steel.
- Improve work flow with additional movable surfaces.
- Same height as the Vizu Auto Breader.
- 3 tops for storing breading boxes.
- Fully welded frame.
- Heavy duty non-marking castors.
- 2 Castors braked for stable foundation.
- **BREADING BOXES NOT INCLUDED.**

VIZU MOBILE LANDING TABLE

- All stainless steel.
- Holds six Gastronorm pans 65mm deep.
- Mounted on castors (two lockable).
- Includes pans and wires.

Name	Model Code	Dimensions (w x d x h)	Specifications	List Price
Vizu 50lb. Counter Top Tumbler	VI50LBVTM	621 x 657 x 592mm	0.3kW 1.4A 230V	£6,890.00
Vizu Auto Breader	VI005AB	710 x 601 x 1050mm	0.1 kW 0.4A 230V 50Hz	£3,850.00
Vizu Mega Auto Breader	VI005MAB	1050 x 601 x 1050mm	0.1 kW 0.4A 230V 50Hz	£4,615.00
Vizu Loading Trolley	VITR01	540 x 645 x 763mm	N/A	£845.00
Vizu Mobile Landing Table	VI020	420 x 680 x 923mm	N/A	£1,135.00

Vizu Auto Breader Accessories

Model Code	Description	List Price
FF61A01	Half size drain basket to fit VI005AB Auto Breader	£127.00
FF271A01	Full size drain basket to fit VI005MAB Auto Breader	£124.00
FSMAXIBIN	50kg capacity mobile plastic flour bin with lid	£495.00

PRESSURE FRYERS



VIZU 1600 PRESSURE FRYER

- All stainless steel.
- Low cooking oil consumption.
- Trouble free maintenance and clean up.
- Has a food capacity of 3.1kg (Cooks between 18 - 24 pieces per cook).

VIZU 1800 PRESSURE FRYER

- All stainless steel.
- Low cooking oil consumption.
- Trouble free maintenance and clean up.
- Has a food capacity of 6.2kg (cooks between 24 - 36 pieces per cook).

Name	Model Code	Dimensions (w x d x h)	Specifications	List Price
Vizu Pressure Fryer (BR86086) with Smart Touch Controller	BR1600CEEST	406 x 762 x 1058mm	6kW 27.3A 1ph or 9.1A 3ph 220V 50Hz	P.O.A
Vizu Pressure Fryer (BR86084 with Smart Touch Controller) (electric)	BR1800CEEST	457 x 908 x 1152mm	9.9kW 45A 1ph or 15A 3ph 220V 50Hz	P.O.A
Pressure Fryer (BR86123) with Smart Touch Controller (LPG Gas)	BR1800CELPGST	457 x 908 x 1152mm	65000 Btu / hr 1/2" + 13A	P.O.A
Pressure Fryer (BR86122) with Smart Touch Controller (Nat Gas)	BR1800CENATST	457 x 908 x 1152mm	65000 Btu / hr 1/2" + 13A	P.O.A



PRESSURE FRYERS



VIZU 2400 PRESSURE FRYER

- All stainless steel.
- Built in filter system.
- User friendly operation.
- Has a food capacity of 10kg (cooks between 48 - 60 pieces per cook).

VIZU OIL TENDER

- All stainless steel fabricated construction.
- Easy pour spout to reduce spillage.
- Pivoted handle is designed to tilt the unit to improve accuracy while pouring oil into narrow opening.

Name	Model Code	Dimensions (w x d x h)	Specifications	List Price
Vizu Pressure Fryer (BR86085) with Smart Touch Controller (electric)	BR2400CEEST	608 x 1118 x 1187mm	15kW 22.7A 3ph 220V 50Hz	P.O.A
Pressure Fryer (BR86117) with Smart Touch Controller (LPG Gas)	BR2400CELPGST	608 x 1118 x 1187mm	95000 Btu / hr 1/2" + 15A	P.O.A
Pressure Fryer (BR86116) with Smart Touch Controller (Nat Gas)	BR2400CENATST	608 x 1118 x 1187mm	95000 Btu / hr 1/2" + 15A	P.O.A
Vizu Oil Tender	FFA011	370 x 625 x 220mm	N/A	£585.00

CARE PACKS

Model Code	Description	List Price
BRBROASTER1600	1600 Vizu Pressure Fryer Care Pack	£496.00
BRBROASTER1800	1800 Vizu Pressure Fryer Care Pack	£586.00
BRBROASTER2400	2400 Vizu Pressure Fryer Care Pack	£496.00

SMART TOUCH CONTROLLER

Model Code	Description	List Price
BR17226	Smart Touch Fryer Controller	P.O.A
BR17358	Smart Touch Circuit Card and Screen	P.O.A
BR17575	Chasis	P.O.A

BROASTER ACCESSORIES

Model Code	Description	List Price
FF1800CRUMB	Crumb catcher for 1800 pressure fryers	£115.00
BR17595+09815	4 Tier basket with movable shelves, individual covers and handle for 1800 pressure fryers	£890.00
BR11262	3 Tier basket for 1600 pressure fryers	£975.00
BR002B	4 Tier basket for 1800 pressure fryers	£1,183.00
BR10730	Replacement basket for 1600 pressure fryers	£400.00
BR09804	Replacement basket for 1800 pressure fryers	£475.50
BR09815	Replacement basket handle for all models	£208.00
DIAYCB12-1	1/2" flexible gas hose	£85.00
DIAYCB20-1	3/4" flexible gas hose	£92.00
FFMETALROD	Metal rodding stick for cleaning pressure fryer	£16.00
SISF001POLY	100 x 1600 model re-useable filter papers	£127.00
SISF002POLY	100 x 1800 model re-useable filter papers	£134.00
BR15495	65 x 2400 model filter papers	£145.00
BR99500	20lbs Broaster well deep cleaning solution	£120.00
AVMS861-782	Medium thick marigold industrial emperor gloves in black	£30.00



VIZU GASTRO WARMER

- 1/1 or 3 x 1/3 gastro pan
- 1/1 GN pan is removable for easy cleaning.
- Digit read outs for time and temperature display.
- Easy open and close with large handle.
- No fan to fail – unit uses convection to circulate humidity.



VIZU GASTRO WARMER 2 DRAWER

- 2 x 1/1 gastro pan
- 1/1 GN pan is removable for easy cleaning.
- Digit read outs for time and temperature display.
- Easy open and close with large handle.
- No fan to fail – unit uses convection to circulate humidity.



VIZU MINI HUMIDIFIED HOLDING CABINET

- Visual digital temperature display / control.
- Evenly controlled humidity by means of an internal fan over the water pan.
- Adjustable humidity vent control.
- Removable pan runners for ease of cleaning.
- Heavy duty non-marking castors (2 lockable)
- 6 x 1/1 GN pan 65mm deep capacity.

Name	Model Code	Dimensions (w x d x h)	Specifications	List Price
Vizu Gastro Warmer	VIGWCOMP	605 x 505 x 368mm	0.6kW 2.6A 230V 50Hz	£1,730.00
Vizu Gastro Warmer 2 Drawer	VIGWCOMP2DR	605 x 505 x 540mm	0.6kW 2.6A 230V 50Hz	£2,622.00
Vizu Mini Humidified Holding Cabinet	VI014SHHC	538 x 651 x 887mm	0.9kW 3.9A 230V 50Hz	£3,825.00

Vizu Holding Range Accessories

Model Code	Description	List Price
VIGASTROSTAND	Table top stand to suit VIGW3P 300mm high	£485.00
VIGASTROSTAND-3PT	Table top stand to suit VIGW3PPT 300mm high	£485.00
VIGASTROSTAND-TALL	Table top stand to suit VIGW3P 430mm high	£495.00
VIGASTROSTAND-TALL-3PT	Table top stand to suit VIGW3PPT 430mm high	£495.00
GSGAST90022	1/1 Gastronorm pan 65mm deep	£28.00
GSGAST160	Stainless steel wire inserts to fit 1/1 GN pan (any depth)	£13.00



VIZU GASTRO WARMER 3 PAN PASS THROUGH SINGLE HANDLED

- Individual timers for each pan.
- 1/3 clear gastronorm pans act as pull out hot drawers.
- Thermostatically controlled interior heated environment.
- Sealed interior hot product storage spaces.
- Storage solution helps to trap moisture ensuring product is help to a high standard.
- No fan to fail – unit having minimal moving parts ensuring minimal down times.



VIZU GASTRO WARMER 3 PAN PASS THROUGH DOUBLE HANDLED

- Individual timers for each pan.
- 1/3 clear gastronorm pans act as pull out hot drawers.
- Thermostatically controlled interior heated environment.
- Sealed interior hot product storage spaces.
- Storage solution helps to trap moisture ensuring product is help to a high standard.
- No fan to fail – unit having minimal moving parts ensuring minimal down times.



VIZU GASTRO WARMER 1 PAN PASS THROUGH

- Individual timer for pan.
- 1/1 clear gastronorm pans act as pull out hot drawers.
- Thermostatically controlled interior heated environment.
- Sealed interior hot product storage spaces.
- Storage solution helps to trap moisture ensuring product is help to a high standard.
- No fan to fail – unit having minimal moving parts ensuring minimal down times.

Name	Model Code	Dimensions (w x d x h)	Specifications	List Price
Vizu Gastro Warmer 3 Pan Pass Through Double Handled	VIGW3PPT	600 x 346 x 247mm	1kW 4.4A 230V	£2,170.00
Vizu Gastro Warmer 3 Pan Pass Through Single Handled	VIGW3PPT-SH	600 x 346 x 247mm	1kW 4.4A 230V	£2,150.00
Vizu Gastro Warmer 1 Pan Pass Through	VIGW1PPT	600 x 346 x 247mm	1kW 4.4A 230V	P.O.A



Keep your sandwich make-up line efficient with our single or double sided, Vizu Gastro Warmer 3 Pan Pass Through.

Three digital timers ensure your team can easily monitor holding times at all times.

Place at eye level for maximum ease of use and create more workspace in the burger line!



- Hard chrome polished platens.
- Side mounted tool rack.
- Variable time pre-sets for different products.
- Removable grease trays for easy cleaning.
- Changeable non-stick upper platen covers.
- Unit of castors for easy moving for cleaning below.
- Easily accessed from control panel.



- Need a Sauce Boss? See [page 21](#).

VIZU 450 CLAM GRIDDLE

Model Code	Name	Dimensions (w x d x h)	Specifications	List Price
VICG450OCL	Vizu 450 Clam Griddle Smooth	457 (523 with tool rack) x 968 x 1140mm (1480mm open)	9kW 22A 415v 3ph	£12,340.00

Model Code	Description	List Price
VI017B	Stainless steel bun holding tray	£68.00
MFCLAMTEFHOLDER	'Non-stick' sheet holders for 450 Clam Grill (1 set)	£110.00
MF65A04	Angled trough cleaning tool	£27.00
TYCL116X49	Replacement silver 'non-stick' sheet sheet for Clam Griddle	£31.00
VE367-B	Burger spatula	£20.00
MAMC001	12 x 14oz griddle cleansing powder	£93.00
FSPC161	Redi - Grill scraper	£162.00
FF65TOOLCLIP	Vizu Clam tool holder clip	£120.00
MF65-56	'Non-stick' sheet sheet spring clip (set of 4)	£45.00
MIXXRASQ	Scaper handle & 6 blades for cleaning mirror finish	£98.00
MIXXPAQCUCHI2	Pack of 5 x 6" griddle scraper blades	£42.00

Let us design your burger make-up line.
Contact us on sales@fast-food-systems.co.uk or
call +44 (0) 118 944 1100 to get started.





FOOD CHUTE RANGE



VIZU 2 TIER FOOD CHUTE FC8

- Front and rear product lane labels with mounts.
- Movable product lane dividers for different widths.
- Air baffles to reduce heat loss.
- Top surface of the food chute is removable for easy cleaning.
- Full stainless steel construction.
- Adjustable feet to aid levelling machine.
- Adjustable heating elements for different product types.



VIZU 2 TIER FOOD CHUTE FC14

- All stainless steel construction and up to 14 product lanes.
- Heat lamps controlled by variable dimmer controls.
- Heat lamps above with independent bottom heat.
- Complete with lane listing strips and holders.
- Both decks controlled independently from each other.
- Top heat and base heat.



VIZU 3 TIER FOOD CHUTE

- All stainless steel construction.
- Adjustable lane guides and each tier is heated by independently controlled heat lamps.
- Complete with lane listing strips and holders.
- Top heat only.

Name	Model Code	Dimensions (w x d x h)	Specifications	List Price
Vizu 2 Tier Food Chute FC8	VI017	710 x 787 x 778mm	2.1kW 10A 230V	£3,140.00
Vizu 2 Tier Food Chute FC14	VIBC14	1210 x 787 x 773mm	4.2kW 20A 230V 1ph	£4,975.00
Vizu 3 Tier Food Chute	VI3TFC	800 x 805 x 1030mm	2.4kW 10.5A 230V 50Hz	£4,325.00

FOOD CHUTE RANGE



VIZU ECONOMY 2 TIER FOOD CHUTE

- Hygienic all stainless steel construction.
- A simple ON/OFF switch operates the heat lamps.
- Designed for front and rear loading and unloading.
- Complete with lane listing strips for product identification.
- Removable top chute part for easy cleaning.
- Air baffles to help improve heat retention.
- Adjustable feet to help with levelling on uneven surfaces.



VIZU HEATED 2 TIER FOOD CHUTE

- All stainless steel construction.
- Adjustable lane guides.
- Each tier is heated by independently controlled heat lamps.
- Complete with lane listing strips and holders.

Name	Model Code	Dimensions (w x d x h)	Specifications	List Price
Vizu Economy 2 Tier Food Chute	VI017S	658 x 661 x 725mm	1.4kW 6A 230V 50Hz	£1,845.00
Vizu Heated 2 Tier Food Chute	VI2TFC	611mm x 415mm x 700mm	0.8kW 3.5A 230V 50Hz	£1,785.00

Vizu Food Chute Accessories

Model Code	Description	List Price
VI017B	Burger make up tray	£68.00
VI017A	Burger make up tray hanging rail for FC8	£100.00
VI017AWS	Low level burger make up tray hanging rail for FC8 stand	£98.00
FFSWSTONG	Tong storage box unit to fit all Vizu wrap stands	£104.00



VIZU SLIM LINE BUN TOASTER

- Vertical style allows reduced footprint.
- Toast/caramelize both the 'Heal & Crown' at the same time.
- Perfect for a production style restaurant.
- Lower bread chute can be placed front or rear.
- Works with a two staff member system – load from rear removed from front.
- Adjust the depth to allow for thinner or thicker 'Heals & Crowns'.
- Easy maintenance designed to minimize down times.



VIZU BREAD TOASTER

- Automatic feed conveyor.
- Upper and lower heating.
- Full high quality stainless steel construction.
- Compact design with lower return chute.
- Easy to operate heating control on the front.
- Height adjustable to allow different thicknesses of bread.
- Lower fan allowing additional air flow improving heat distribution.
- Store your buns in a reachable place with our Fast Serv 700 Bun Tray Unit on [Page 26](#).

Name	Model Code	Dimensions (w x d x h)	Specifications	List Price
Vizu Slim Line Bun Toaster	VISBT	651 x 380 x 695mm	2.1kW 9.5A 230V 50Hz	£3,940.00

Name	Model Code	Dimensions (w x d x h)	Specifications	Special Net Price
Vizu Bread Toaster	VIBRT	385 x 570 x 425mm	2.9kW 12.6A 230V 50Hz	£995.00

Model Code	Description	List Price
MF167POLY	Poly replacement 'non-stick' sheet platten (set of two)	£185.00

WRAP STAND RANGE



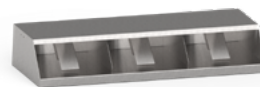
VIZU WRAP STAND WR5

- Counter-top version.
- 5 1/6 GN Pans for garnish.
- Wrap station above.



VIZU WRAP STAND WR3

- Counter-top version.
- 3 1/6 GN Pans for garnish.
- Wrap station above.



VIZU WRAP STAND WALL-MOUNTED

- Wall mounted wrap station.



VIZU HEATED BURGER ASSEMBLY UNIT

- Movable product lane dividers for different widths
- Heat lamps to keep bagged products warm

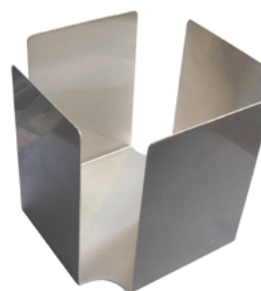
Name	Model Code	Dimensions (w x d x h)	Specifications	List Price
Vizu Wrap Stand WR5	VIWR5	921 x 302 x 702mm	N/A	£1369.00
Vizu Wrap Stand WR3	VIWR3	595 x 302 x 702mm	N/A	£1185.00
Vizu Wrap Stand Wall-Mounted	VIWR3W	920 x 302 x 150mm	N/A	£675.00
Vizu Heated Burger Assembly Unit	VIHBA	1213 x 609 x 629mm	1.9kW 8.3A 230V 50Hz	£2,542.00



VOTR2800-31



VOTR3802-28



SFG330



RBK157

Name	Model Code	Dimensions (w x d x h)	Specifications	List Price
Sauce Boss (grey)	VOTR2800-31	191 x 159 x 279mm	N/A	£379.00
Double Sided Straw Dispenser	VOTR3802-28	228 x 191 x 178mm	N/A	£380.00
Napkin dispenser	SFG330	160 x 160mm	N/A	£68.00
Squeeze Sauce Dispensers	RBK157		N/A	£3.90



SINGLE CERAMIC GRILL ALL SMOOTH PLATES

- High quality panini grill for professional use.
- Fully counter-balanced top plate prevents food being crushed.
- Ribbed top plate.
- Separate ON/OFF and thermostat controls for durability & safety.
- Conforms to all EC electrical safety standards.
- Heavy duty construction.

Name	Model Code	Dimensions (w x d x h)	Specifications	List Price
Single ceramic grill all smooth plates	FAMVL	490 x 450 x 190mm	2kW 8.7A 230V 50Hz	£1,480.00

Accessories

Model Code	Description	List Price
FAPR13049	Scraper for Ceramic Grill	£22.00

Spare Plates

Model Code	Description	List Price
FAPR13003	Glass ceramic base for single grill	£155.00
FAPR13004	Glass ceramic base for double grill	£229.00
FAPR13023	Upper ribbed glass ceramic for single and double grill	£363.00
FAPR13026	Upper smooth glass ceramic for single and double grill	£149.00



The Contact Grill Company



- Easy to use.
- Easy to clean.
- Digital timer with 5 pre-set times.
- Individual temperature controls for top and bottom plates.
- Easy to install. 16 amp switch isolator required.
- Non-stick surfaces: chromed bottom plate & long life non-stick sheet on the top plate.
- Supplied without plugs.

Name	Model Code	Dimensions (w x d x h)	Specifications	List Price
Single Clam Grill	RMCCS1	360 x 660 x 400mm	2 x 3.5kW 2 x 16A 230V 50Hz	£2,310.00

Accessories

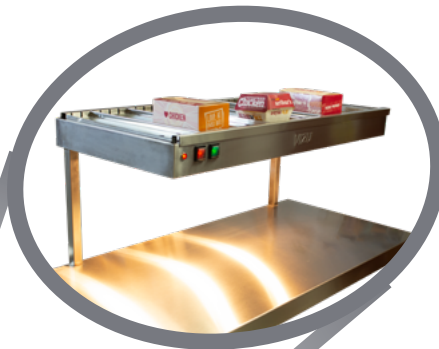
Model Code	Description	List Price
RMTS1	Non-stick sheet for small table top Clam	£32.00
RMEGS-1	Egg spacer for Clam	£21.00
FFST360X715M	Mobile stand for Gastro Clam grill with shelf under Measures: 360mm wide x 660mm deep x 715mm high	£1080.00



NEW BURGER ISLAND

Vizu Heated Burger Assembly Unit

Vizu Gastro Warmer 3 Pan Pass Through



Vizu Gastro Warmer 2 Drawer

Name	Model Code	Dimensions (w x d x h)	Specifications	List Price
Burger Make-Up Island	N/A	1750 x 1200 x 1585mm	4.9kW 20.4A 230V 50Hz	(P.O.A.)
600 Gastro Warmer 2 Drawer	VI600GW2DR	600 x 555 x 882mm	0.6kW 2.6A 230V 50Hz	£3,320.00



600 CUP 3 LID UNIT

- All stainless steel.
- Horizontal cup tube dispenser.
- Single shelf.
- Half height double doors.



600 WRAP 2/4 UNIT

- All stainless steel.
- Two tier wrap storage
- Half height double doors.
- Open space area for bucket storage.



600 DOUBLE WRAP BUCKET UNIT

- All stainless steel.
- Easy access dispense area.



300 CONDIMENT UNIT

- All stainless steel.
- 4 x condiment sections.



600 CONDIMENT UNIT

- All stainless steel.
- 8 x condiment sections.



600 ICE CHEST UNIT

- All stainless steel.
- Easy access dispense area.
- GN pan for ice.
- Drawer.



600 LITTER BIN UNIT

- All stainless steel.
- Removable plastic refuse container.



600 WRAP BUCKET UNIT

- All stainless steel.
- Easy access dispense area.

Name	Model Code	Dimensions (w x d x h)	Specifications	List Price
600 Cup 3 Lid Unit	VI600CUP3LID	600 x 555 x 882mm	N/A	£1,655.00
600 Wrap 2/4 Unit	VI600WRAP2/4	600 x 555 x 882mm	N/A	£1,385.00
600 Double Wrap Bucket Unit	VI600WRAPBUCKET2	600 x 555 x 882mm	N/A	£1,615.00
300 Condiment Unit	VI300CON	300 x 555 x 882mm	N/A	£1,430.00
600 Condiment Unit	VI600CON	600 x 555 x 882mm	N/A	£1,875.00
600 Ice Chest Unit	VI600ICE	600 x 555 x 882mm	N/A	£1,580.00
600 Litter Bin Unit	VI600LITTER	600 x 555 x 882mm	N/A	£1,190.00
600 Wrap Bucket Unit	VI600WRAPBUCKET	600 x 555 x 882mm	N/A	£1,410.00

* The units shown on this page are mid sections of the Fast Serv counter and do not include worktops, end panels, sockets and additional legs required to complete the whole counter unit.



600 WRAP 1/4 UNIT

- All stainless steel.
- Single tier wrap storage.
- 3/4 height double doors.
- Single shelf.



300 CUP 3 UNIT

- All stainless steel.
- Vertical cuptube dispenser.



300 CUPBOARD UNIT

- All stainless steel.
- Full height single doors.
- Single shelf.



600 CUPBOARD UNIT

- All stainless steel.
- Full height double doors.
- Single shelf.



300 250 DEEP SHELF UNIT

- All stainless steel.
- Single shelf.



600 250 DEEP SHELF UNIT

- All stainless steel.
- Single shelf.



300 SHELF UNIT

- All stainless steel.
- Single shelf.



600 SHELF UNIT

- All stainless steel.
- Single shelf.



600 CUP 3 UNIT

- All stainless steel.
- Horizontal cuptube dispenser.
- 3/4 height double doors.



700 BUN TRAY UNIT

- Bun Tray Unit comes with 4 trays to store buns.
- Trays can slide in and out of unit for reloading.

Name	Model Code	Dimensions (w x d x h)	Specifications	List Price
600 Wrap 1/4 Unit	VI600WRAP1/4	600 x 555 x 882mm	N/A	£1,270.00
300 Cup 3 Unit	VI300CUP3	300 x 555 x 882mm	N/A	£1,225.00
300 Cupboard Unit	VI300CUPB	300 x 555 x 882mm	N/A	£895.00
600 Cupboard Unit	VI600CUPB	600 x 555 x 882mm	N/A	£1,200.00
300 250 Deep Shelf Unit	VI300250D	300 x 257 x 882mm	N/A	£540.00
600 250 Deep Shelf Unit	VI600250D	600 x 257 x 882mm	N/A	£580.00
300 Shelf Unit	VI300	300 x 555 x 882mm	N/A	£665.00
600 Shelf Unit	VI600	600 x 555 x 882mm	N/A	£710.00
600 Cup 3 Unit	VI600CUP3	600 x 555 x 882mm	N/A	£1,625.00
700 Bun Tray Unit	VI700BUNTRAY	700 x 555 x 882mm	N/A	£1,580.00
600 Condiment Cupboard Unit	VI600CON4CUPB	600 x 555 x 882mm	N/A	£1,580.00



Model Code	Description	List Price
VITP6D6	600mm wide 600 deep worktop with down turn	£440.00
VITP6D9	900mm wide 600 deep worktop with down turn	£500.00
VITP6D12	1200mm wide 600 deep worktop with down turn	£525.00
VITP6D15	1500mm wide 600 deep worktop with down turn	£580.00
VITP6D18	1800mm wide 600 deep worktop with down turn	£715.00
VITP6D21	2100mm wide 600 deep worktop with down turn	£740.00
VITP12D9	900mm wide 1200 deep worktop with down turn	£545.00
VITP12D12	1200mm wide 1200 deep worktop with down turn	£610.00
VITP12D15	1500mm wide 1200 deep worktop with down turn	£700.00
VITP12D18	1800mm wide 1200 deep worktop with down turn	£800.00
VITP12D21	2100mm wide 1200 deep worktop with down turn	£925.00
VIENDKIT25	Two end panels, leg channel & one leg	£240.00
VIENDKIT55	Two end panels, leg channel & two legs	£275.00

* The units shown on this page are mid sections of the Fast Serv counter and do not include worktops, end panels, sockets and additional legs required to complete the whole counter unit.



CINEMA RANGE



VIZU 600/750/900 POPCORN WARMER

- All stainless steel.
- Large rear access and glass front.
- Fan assisted heating keeps product dry and warm.
- Central product divider for sweet and salt popcorn.
- **CUSTOM BUILT SIZES ALSO AVAILABLE**
- **CONTACT +44 (0) 118 944 1100 FOR DETAILS.**



VIZU ICE BIN

- Stainless steel front and interior.
- Integral drain.
- Front mounted clips for cup lid shelf.



COUNTERTOP COOLED DISPENSER

- Supplied with 3 x chilled freezer bottles as standard.
- 2 x 1/6 Gastronorm pans 100mm deep.
- Clear Perspex hinged lid.



VIZU NACHO SINGLE DOOR CABINET

- Thermally insulated full height front door.
- Option for either LH or RH opening door.
- Thermostatically controlled interior temperature.
- Interior is bathed in visually appealing warm light to show off product.
- Adjustable inner shelf heights.
- Low height profile allowing under counter location.
- No fan to fail – unit uses convection to circulate humidity.

Name	Model Code	Dimensions (w x d x h)	Specifications	List Price
Vizu 900 Popcorn Warmer	VICOWC900	900 x 849 x 716mm	0.4kW 1.8A 230V 50Hz	£3,575.00
Vizu 750 Popcorn Warmer	VICOWC750	750 x 849 x 716mm	0.4kW 1.8A 230V 50Hz	£3,490.00
Vizu 600 Popcorn Warmer	VICOWC600	600 x 849 x 716mm	0.4kW 1.8A 230V 50Hz	£3,285.00
Vizu Ice Bin	FFICEBIN	575 x 581 x 581mm	N/A	£1,610.00
Countertop Cooled Dispenser	VICSJ	330 x 210 x 200mm	N/A	£410.00
Vizu Nacho Single Door Cabinet	VI014HHCG	530 x 697 x 921mm	0.7kW 3.1A 230V 50Hz	£3,940.00

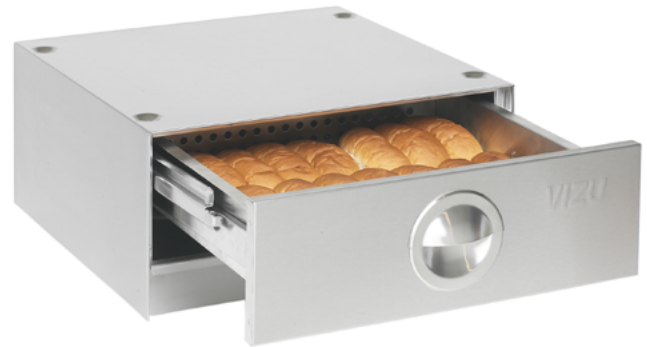
Vizu Concessions Accessories

Model Code	Description	List Price
FF116DRAIN	Drain support to fit underneath ice bin	£376.00
FFCOWCDIVIDER	Divider panel & brackets for VICOWC900	£140.00

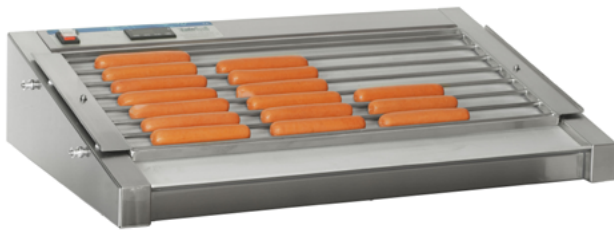
HOT DOG RANGE



VIZU HD2 HOT DOG GRILL



VIZU WD2 WARMER DRAWER



VIZU HD4 HOT DOG GRILL

- Anodised Cooking surface for quality even heating surface.
- Stainless steel grid construction for easy cleaning.
- Temperature display located on front for easy temp checks.
- Optional clear cover available.
- Slow moving oscillating moving produces little or no noise.
- Easy to load and remove hot dogs during operation.
- Easy to maintain.



VIZU WD4 WARMER DRAWER

- Removable water tray for cleaning.
- Warmer drawer is easily removable for cleaning.
- Drawer insert holds product above the base of the draw to improve air flow.
- Heavy duty drawer sliders are fully removable for cleaning and maintenance.
- Drawer has auto close feature to limit moisture loss.
- Very easy operation for unskilled staff.
- No fan to fail – unit uses convection to circulate humidity.

Name	Model Code	Dimensions (w x d x h)	Specifications	List Price
Vizu HD2 Hot Dog Grill	VIHD2	530 x 480 x 192mm	1.1kW 5A 230V 50Hz	£1,735.00
Vizu HD4 Hot Dog Grill	VIHD4	840 x 480 x 192mm	2.1kW 10A 230V 50Hz	£2,035.00
Vizu WD2 Warmer Drawer	VIWD2	500 x 497 x 256mm	1kW 4.3A 230V 50Hz	£1,380.00
Vizu WD4 Warmer Drawer	VIWD4	810 x 497 x 256mm	1kW 4.4A 230V 50Hz	£1,675.00

Warmer Drawer Accessories

Model Code	Description	List Price
VISG2F	HD2 sneeze guard for front counter service	P.O.A.
VISG4F	HD4 sneeze guard for front counter service	P.O.A.
VISG2R	HD2 sneeze guard for rear counter service	P.O.A.
VISG4R	HD4 sneeze guard for rear counter service	P.O.A.



MULTI-VARIABLE HEATED SHOWCASE UNIT

- Fanless design for even heat distribution, reducing energy costs and simplifying maintenance.
- Large sliding doors and ergonomic design ensures easy loading for a variety of products.
- Product illuminated with energy efficient LED lighting.



KENTUCKY HEATED 2 PAN SHOWCASE

- Manufactured from stainless steel with curved front glass.
- Hinged up and over door to rear c/w 2 x 20mm deep GN pans as standard (wires are supplied as optional extra).
- Temperature range: +30 degree / +95 degree C.
- Plain stainless steel front panel.



KENTUCKY HEATED 3 PAN SHOWCASE

- Manufactured from stainless steel with curved front glass.
- Sliding doors to rear, c/w 3 x 40mm deep GN pans as standard (wires are supplied as optional extra).
- Temperature range: +30 degree / +95 degree C.
- Plain stainless steel front panel.

Name	Model Code	Dimensions (w x d x h)	Specifications	List Price
Multi-Variable Heated Showcase Unit	VI3PHDU	1150 x 650 x 660mm	3kw 13A 230v 50hz	£5,265.00
Kentucky Heated 2 Pan Showcase	USHOT2(HINGEDDOOR)	750 x 775 x 585mm	2.1kw 9A 230v 50hz	£2,980.00
Kentucky Heated 3 Pan Showcase	USHOT3(SLIDINGDOOR)	1080 x 775 x 585mm	2.1kw 9A 230v 50hz	£3,620.00



10OZ AEROSOL SPRAY



12 x 10oz AEROSOL SPRAY



Once again, the field of chemistry has produced a product so outstanding, so different, as to revolutionise cleaning and polishing stainless steel.

The Sheila Shine process requires no rubbing or polishing. It is so easy, so simple that it actually makes cleaning a pleasure, with unbelievable results. It removes greasy film, water marks, resists finger prints and streaking, and also preserves the surface against deterioration of any kind.

Sheila Shine also produces miraculous results on Formica, porcelain, fibreglass, enamel, plastic, leathers and furniture.

Model Code	Description	List Price
SHAERO	10oz Aerosol Spray	£16.25
SH001	12 x 10oz Aerosol Spray	£195.00



Fast Food Systems

Unit 1, Headley Park 9, Headley Road East, Woodley, Reading, Berkshire RG5 4SQ

Telephone: +44 (0)118 944 1100

E-mail: sales@fast-food-systems.co.uk

Web: www.fast-food-systems.co.uk