

VIZU FASTSERV MODULAR COUNTER SYSTEM



How to video: <https://youtu.be/Bs5tnGj2zKY>

ASSEMBLY INSTRUCTIONS

FFS Dry Build, 07/03/2013

Service Side



Kitchen Side



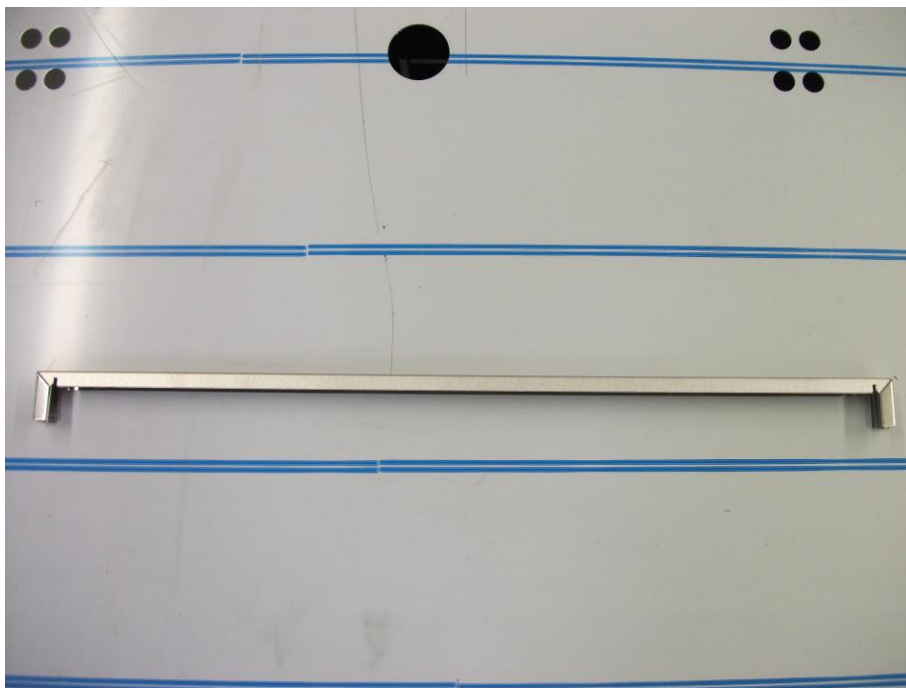
Step 1:

Align the Fastserv units in position according to the supplied drawing.



Step 2a:

Use a single clip to join two units together, from front to rear.



Step 2b:

Locate the clip between the two cabinets that you want to join together.



Step 2c:

Push and tap the clip into position.



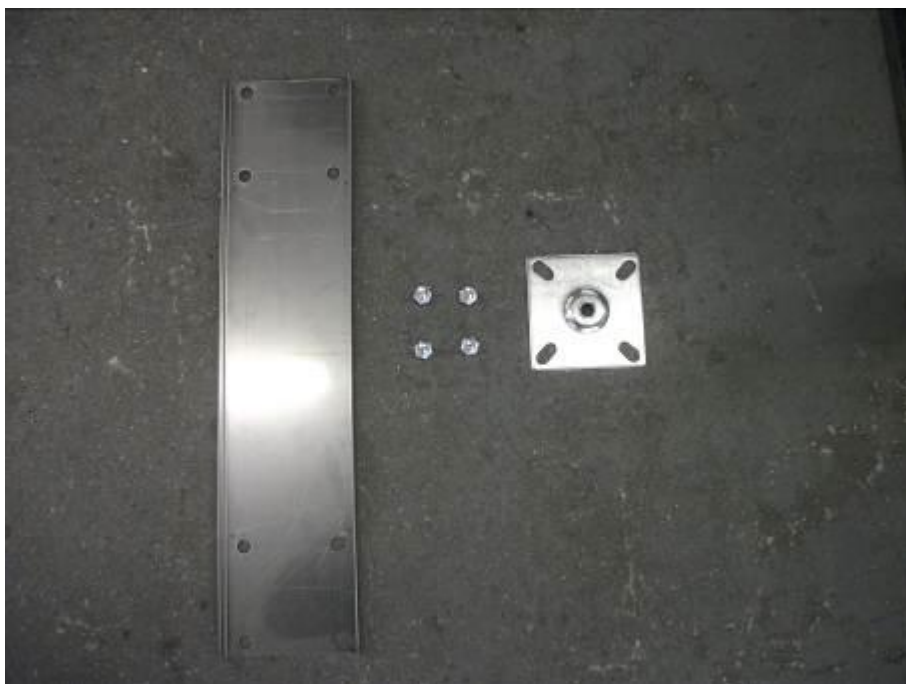
Step 3:

Roll the bank of fastserv units onto it front so that the base is exposed.



Step 4a:

Using the supplied M8 bolts attach the channels, foot plates and feet to the base of the units. The channels should be placed to straddle two units at a time to help hold the assembly together.



Step 4b:

Hold the channels in place.



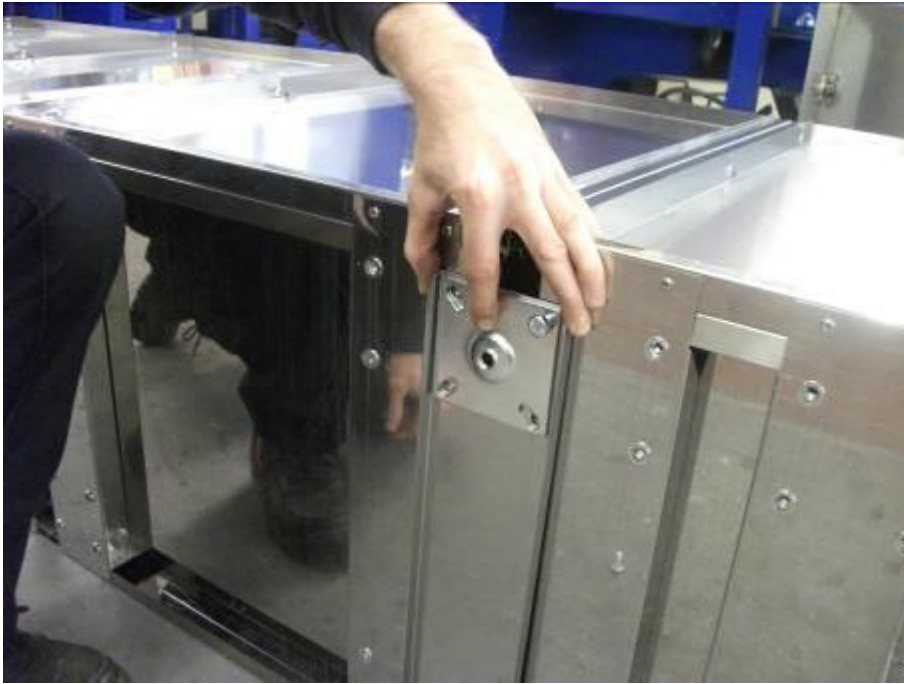
Step 4c:

Align the foot plate over the channel and to the holes.



Step 4d:

Using the supplied M8 bolts begin to attach the parts.



Step 5:

Attach the feet to the foot plates.



Step 5b:

Prepare to roll assembly back up onto its feet.



Step 6:

Roll the unit upright and assemble the front bank of Fastserv in the same way as the just completed rear bank.



Step 7:

Having clipped and attached the feet to the front bank of fastserv it can now be rolled into the upright position.



Step 8:

Using the supplied M4 screws and washers attach the up stand brackets to the Fastserv front unit.



Step 8b:

Align the holes between the bracket and fastserv. The bracket should fit snugly between the rear flanges of the two units.



Step 8c:

Ensure both brackets are firmly attached the Fastserv bank.



Step 9:

The Fastserv units can now be joined together. The front bank should be lifted onto the long channels protruding from the rear bank of Fastserv.



Step 10:

The front bank Of Fastserv must now be attached to the end leg channels, and the last 4 feet must also be attached.



Step 10b:

Getting under the unit attach the plate, bolts, and feet.



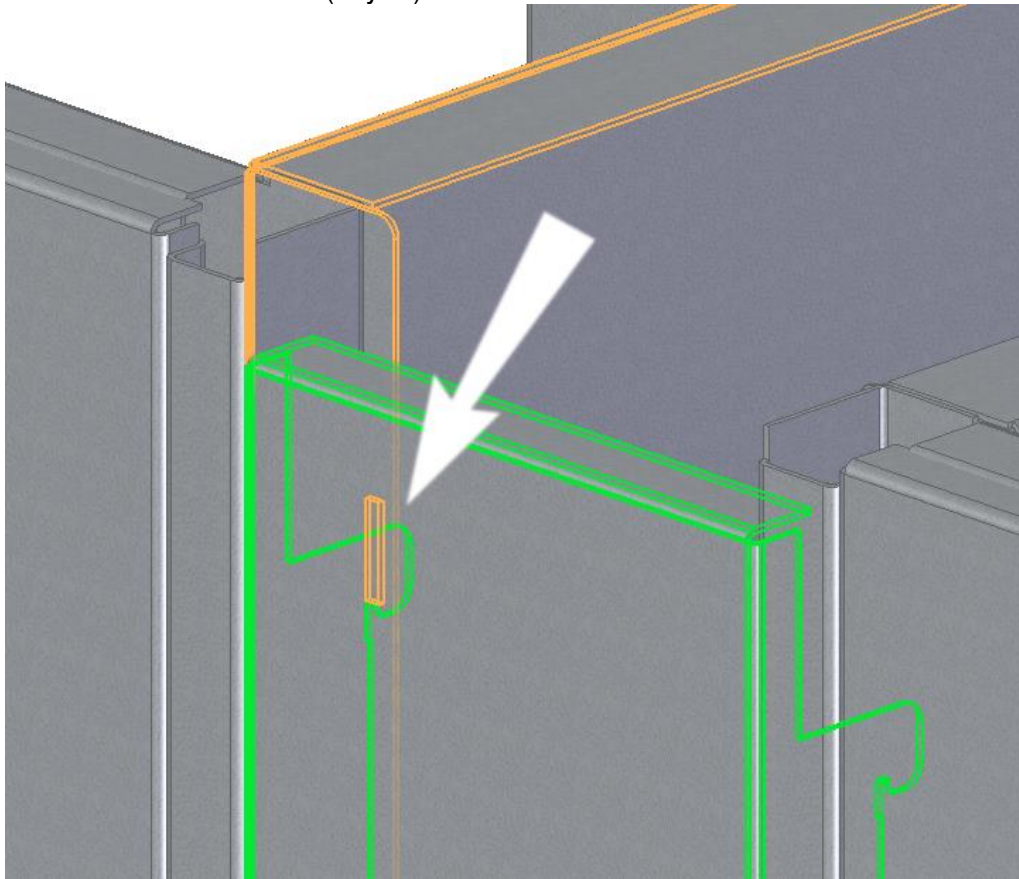
Step 11:

The Fastserv is now structurally assembled and the finishing panels can be attached. Starting with the end infill panels, align the key tabs on the panels to the slots in the fastserv, insert the keys and gently tap into position.



Step 11b:

End Infill – Slot and Tab (keyed)



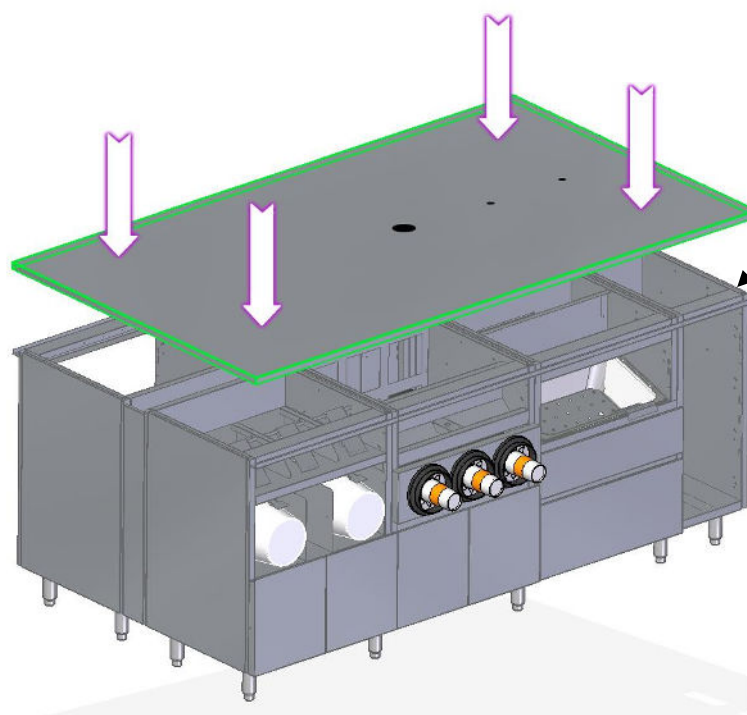
Step 12:

Attach the side panels in the same way as step 11b



Step 14:

With the Infills and panels in place the top can be dropped into position. Align one corner and work around the 4 corners. Ensure it is in the correct orientation, align the up stand holes.



For install on site.
Use silicone on the tops
of all the Fast Serv units
to secure and dampen the top.

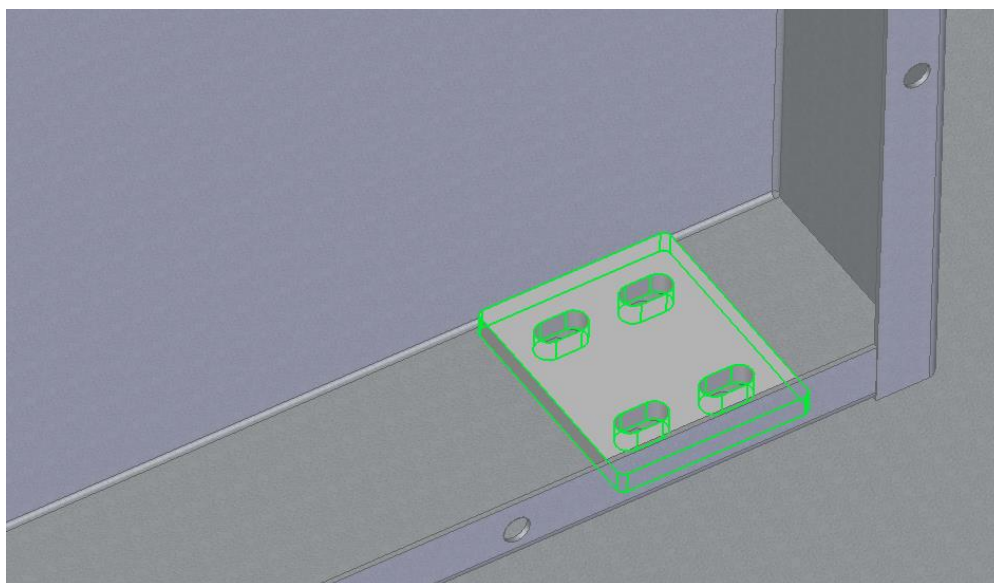


Step 15:

The up stand can now be attached to the unit. Align the up stand to the holes in the bracket which will also align to the holes in the counter. Using the supplied M4 bolts attach the up stand.

**Step 15b:**

The up stand is securing in place with strengthening plates to improve rigidity of the structure.



Step 16:

With the Upstand in position the rear cover can be attached. At this point the electrical connections could be made to the plugs.



The unit is now complete, ensure all accessories are in place and remove plastic.

NOTES;

NOTES;

ORDER ID/JOB NO.....

DATE OF MANUFACTURE/...../.....

DATE OF DELIVERY...../...../.....

Fast Food Systems Limited

Manufacturer & Distributor of Catering Equipment

Unit 1 Headley Park 9 Headley Road East

Woodley Reading Berkshire RG5 4SQ

Tel: 0118 944 1100 Fax: 0118 944 0350

Email: service@fast-food-systems.co.uk